

UPDATING FIRMWARE PS360+

Pre-Update Procedure (Windows 8 Version)

In order to update the firmware on the PS360+ you must install Atmel's free FLIP (FLexible In-system Programmer) software. You'll also need to have Java installed. If you don't have it installed, you can download the special version of FLIP that includes the Java runtime.

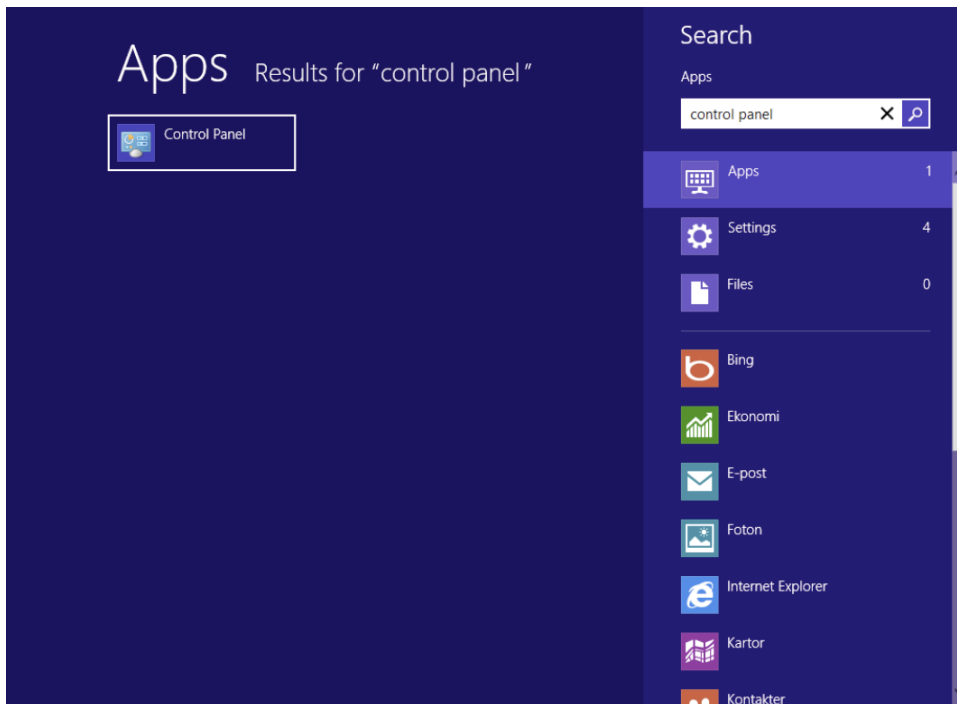
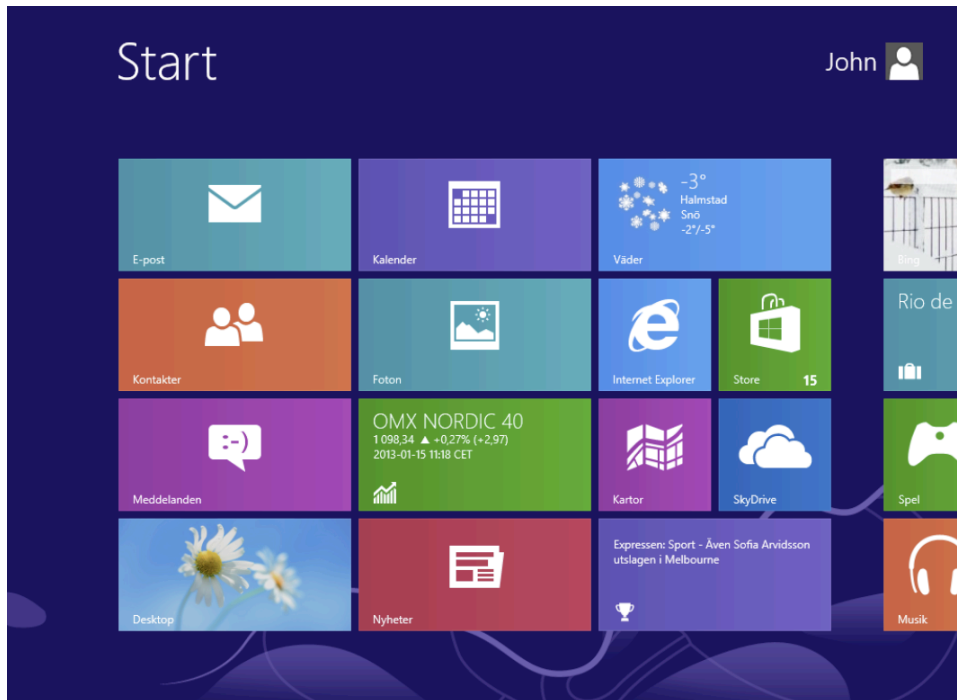
Atmel software page:

<http://www.atmel.com/tools/FLIP.aspx>

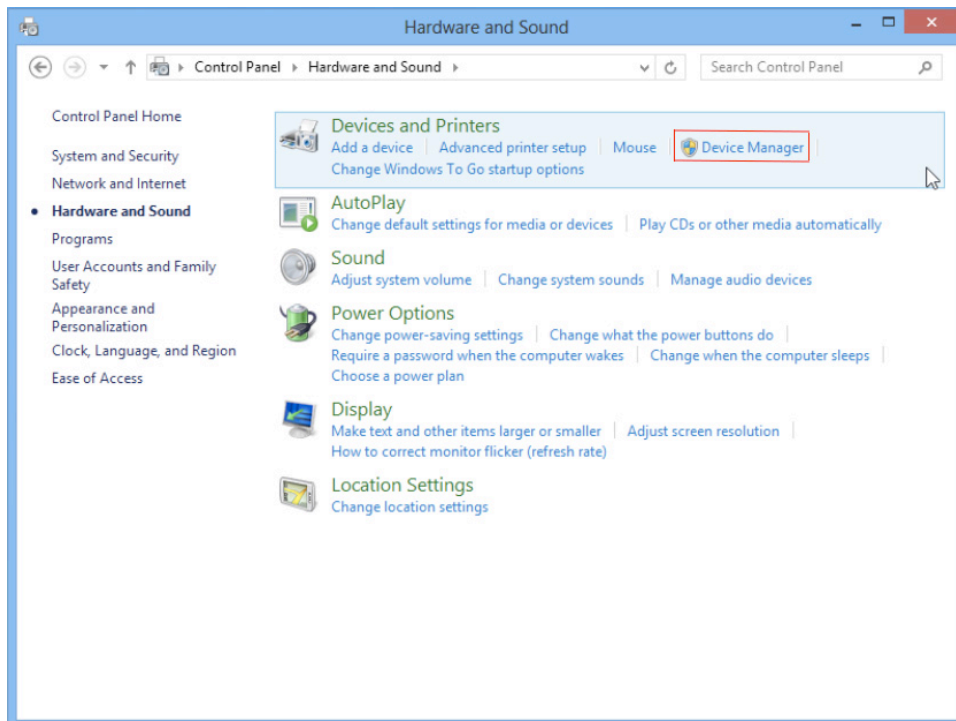
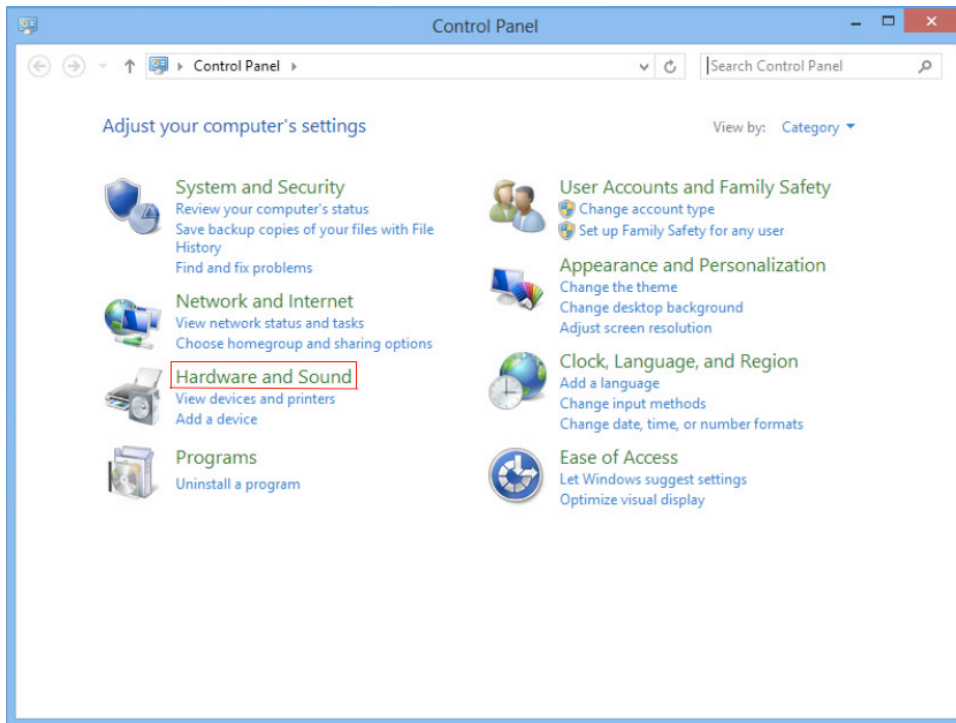
If link does not work just search "Atmel FLIP" and you should find it.

Updating your PS360+ ATMEL Drivers (Windows 8 Version)

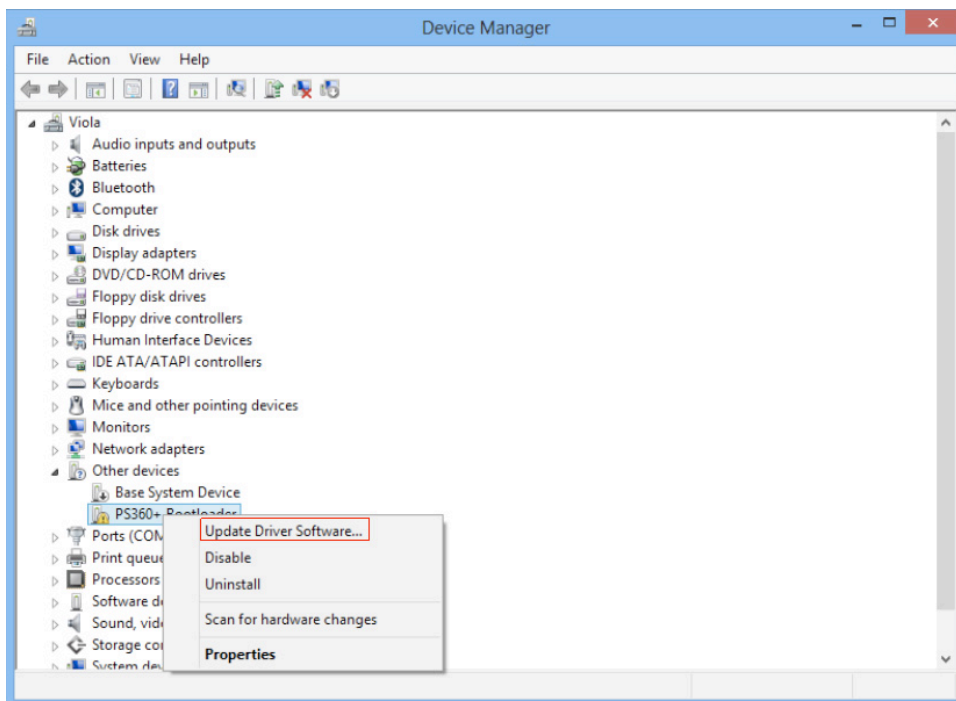
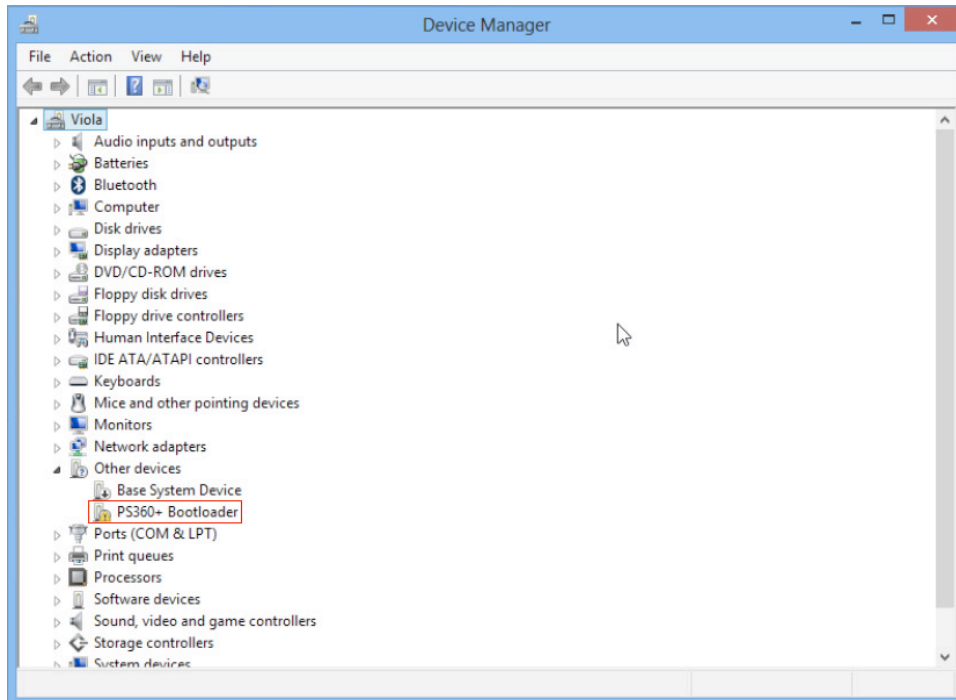
1. Go to the Metro UI and type "control panel". Once that is done click on "Control Panel" to the left.



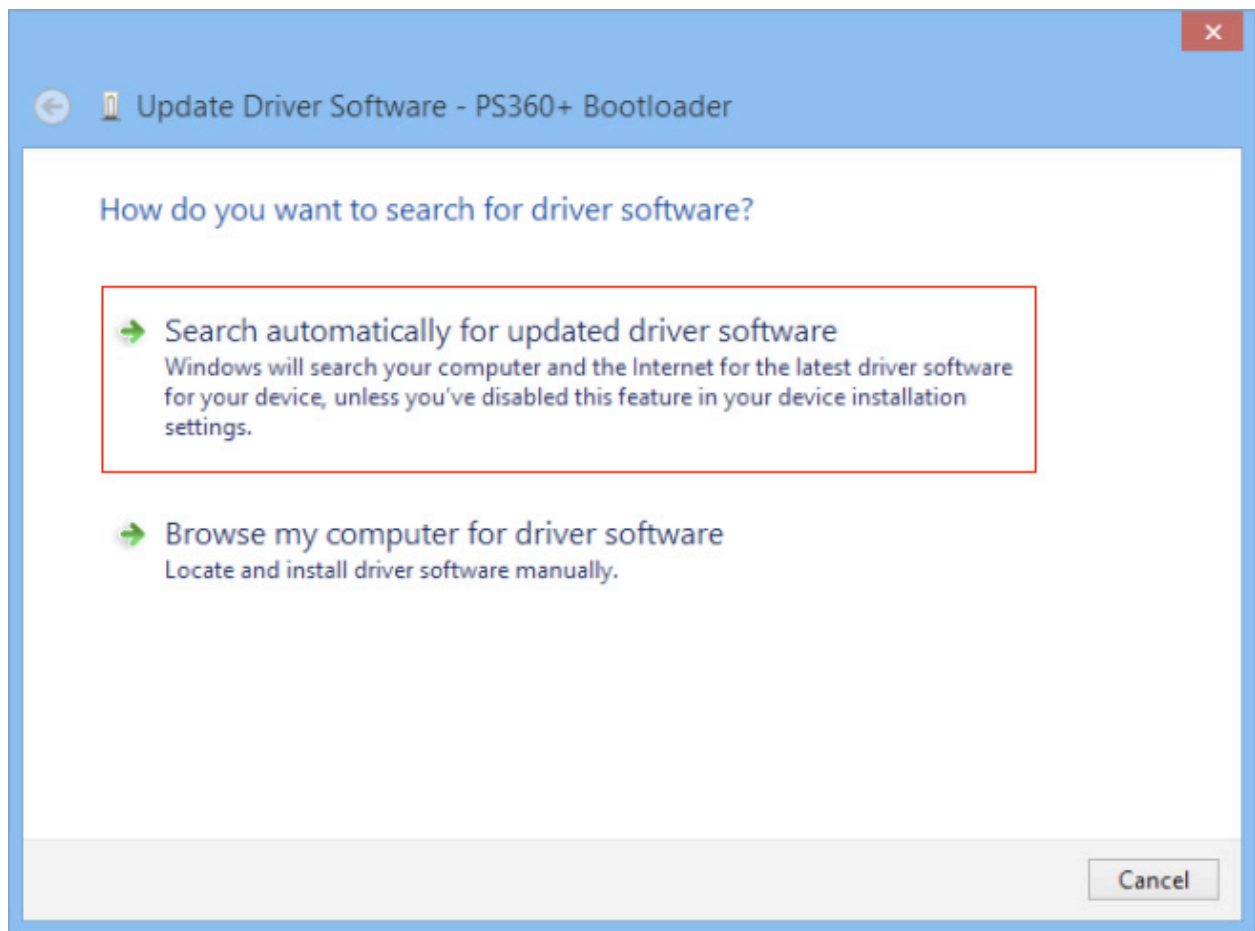
2. Click on "Hardware and Sound". In the new window click on "Device Manager".



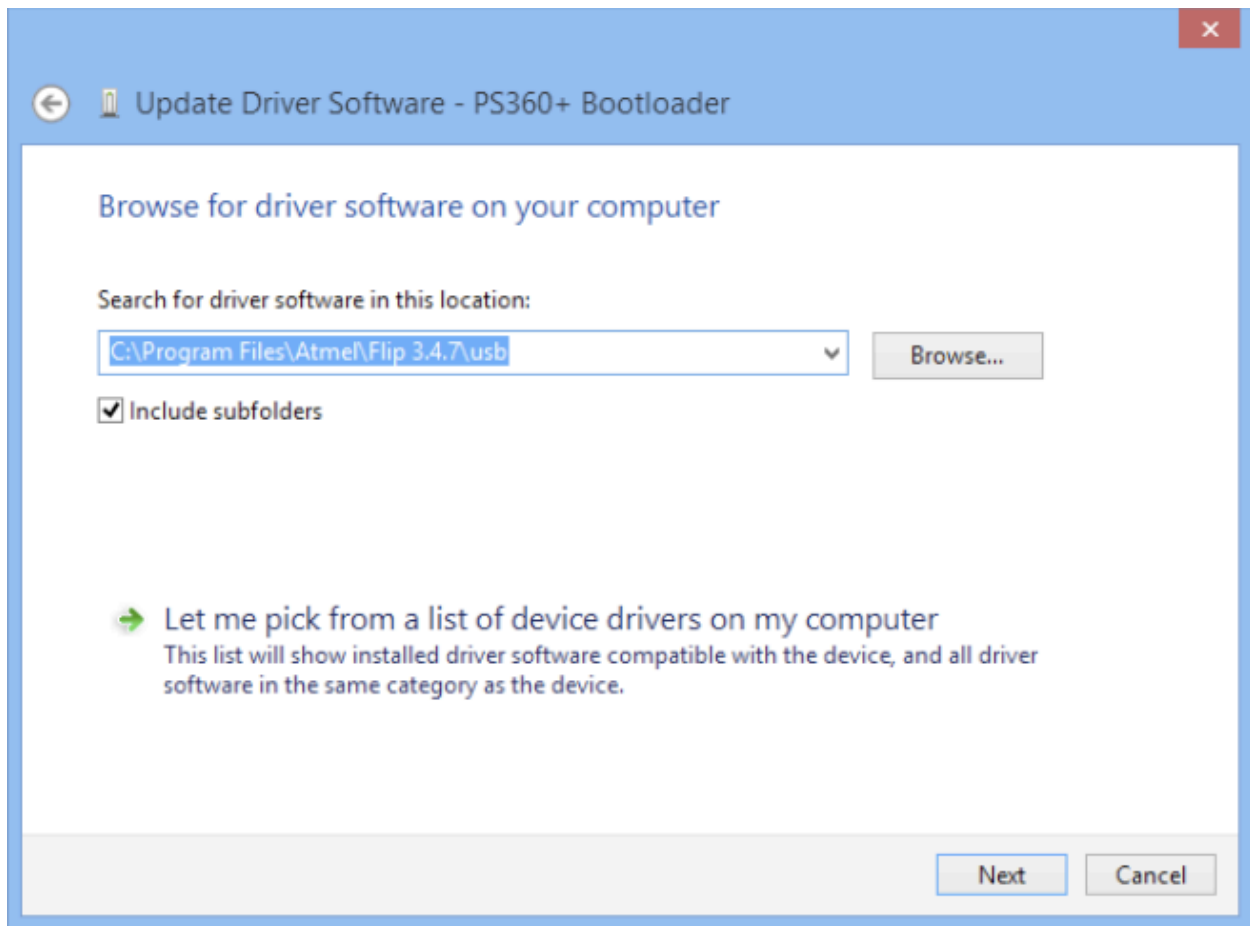
3. Connect the PS360+ in bootloader Mode (hold "Start" button when inserting the USB cable, LED lights should go back and forth on the PS360+). In Device Manager find "PS360+ Bootloader". Right click on it and click on "Update Driver Software...".



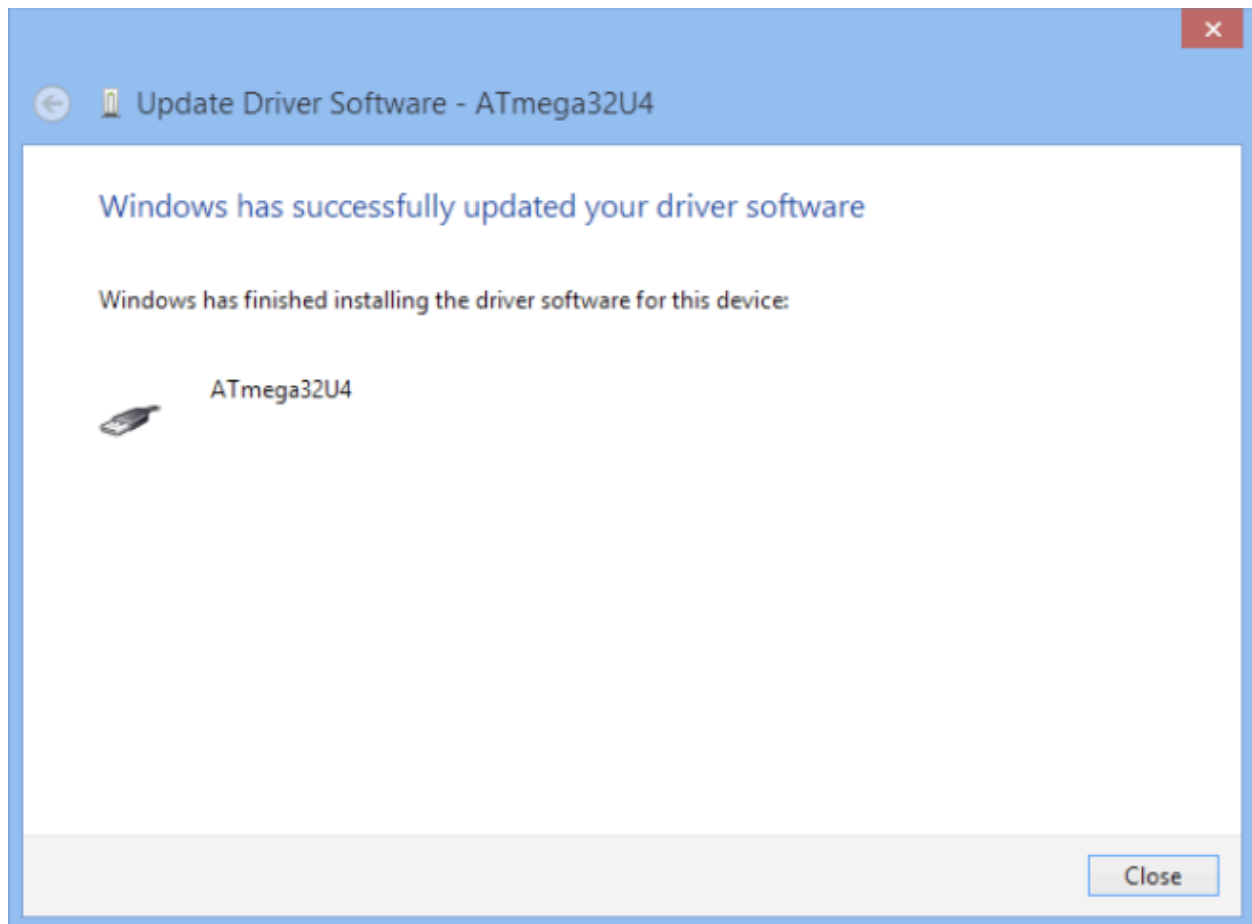
4. Click on "Search automatically for updated driver software".



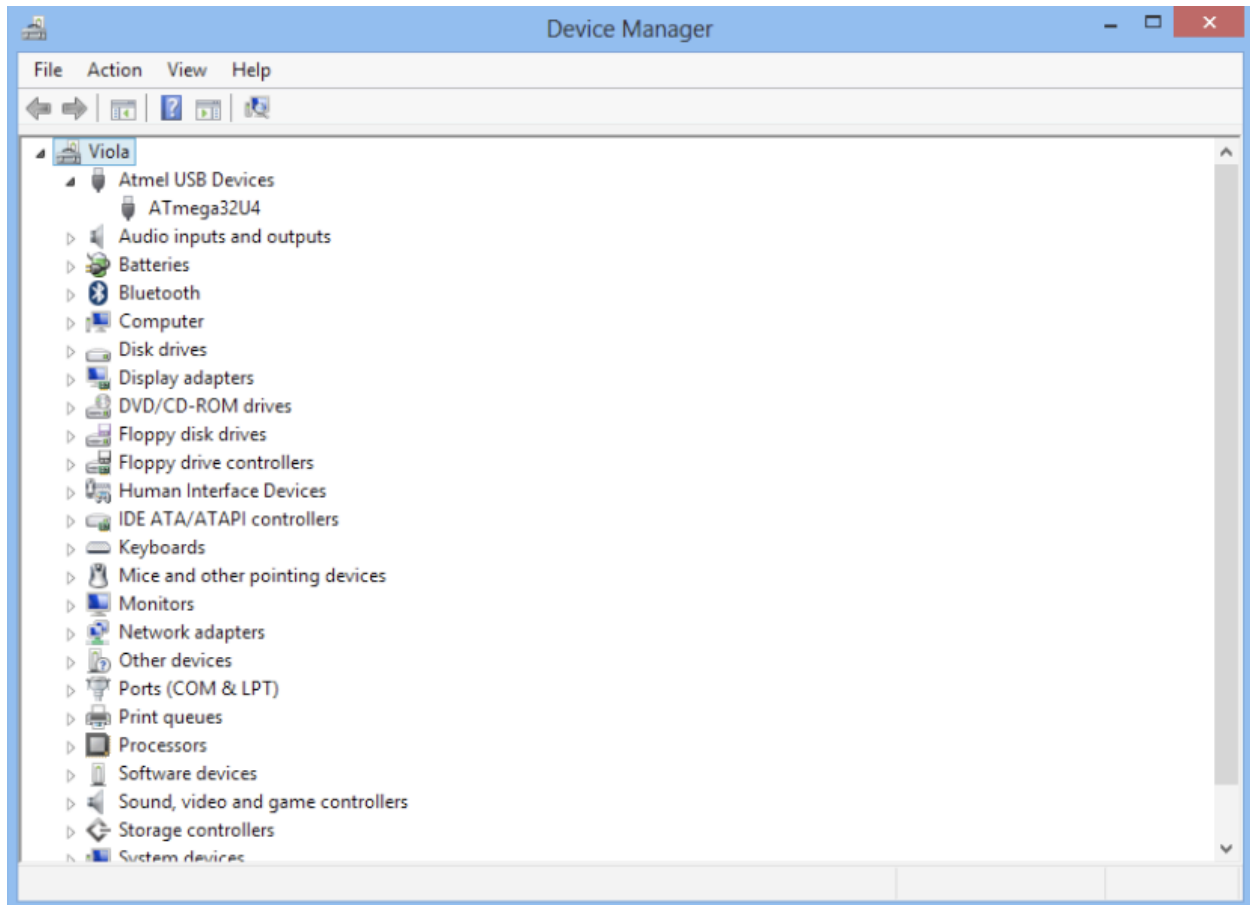
5. Click on "Browse" and find where you installed the FLIP software, click on the sub folder "usb". See picture below for an example on how it can look. Now click "Next".



6. It should install correctly and show a picture like below. After that click "Close".

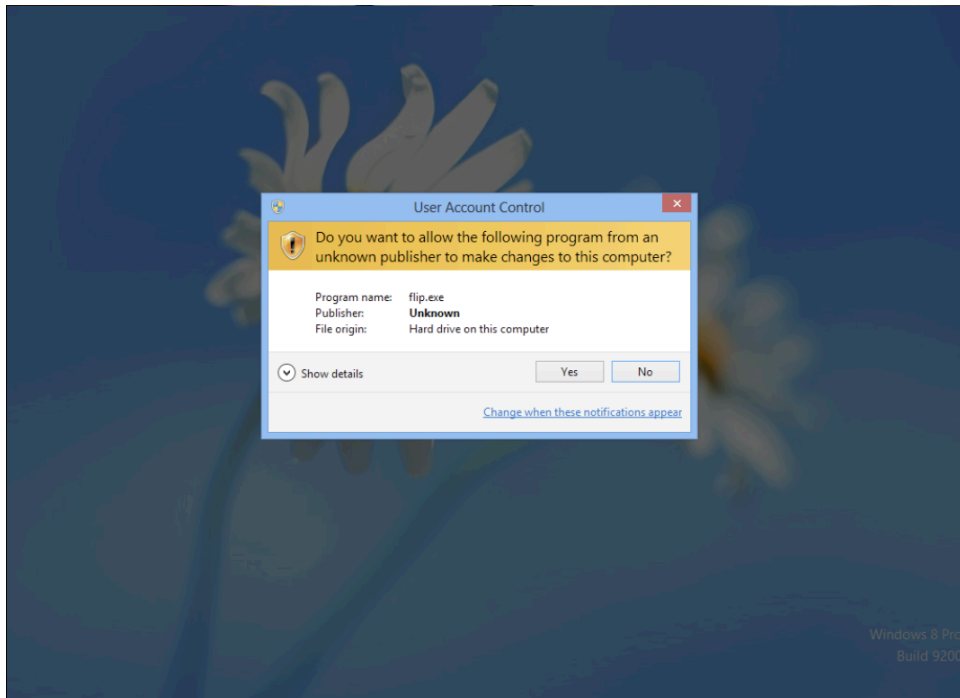
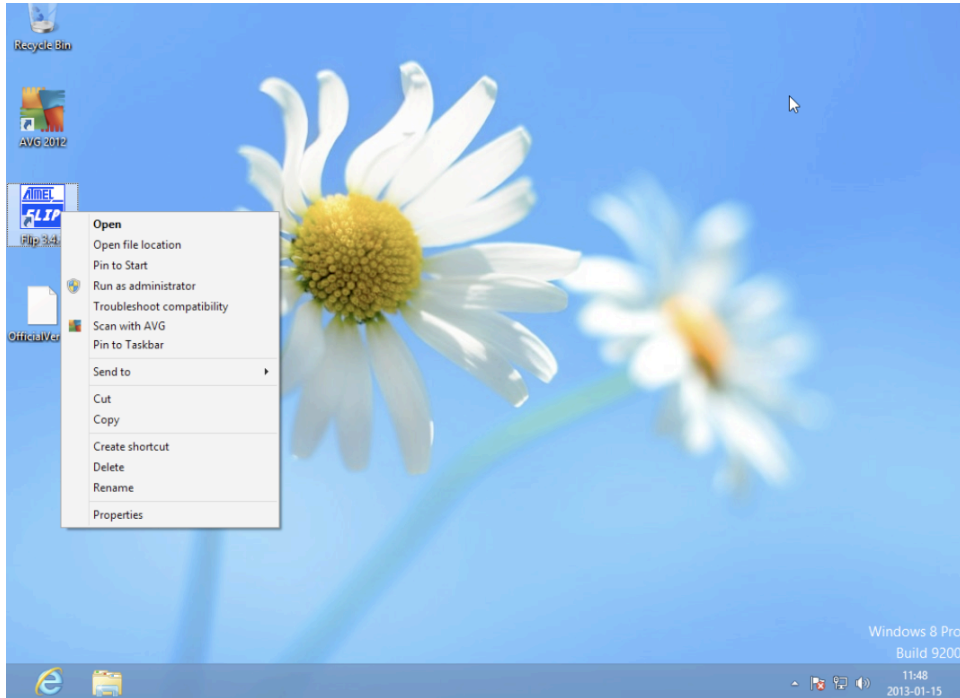


7. In Device Manager there should be something named "Atmel USB Devices", this means everything is looking OK so far.

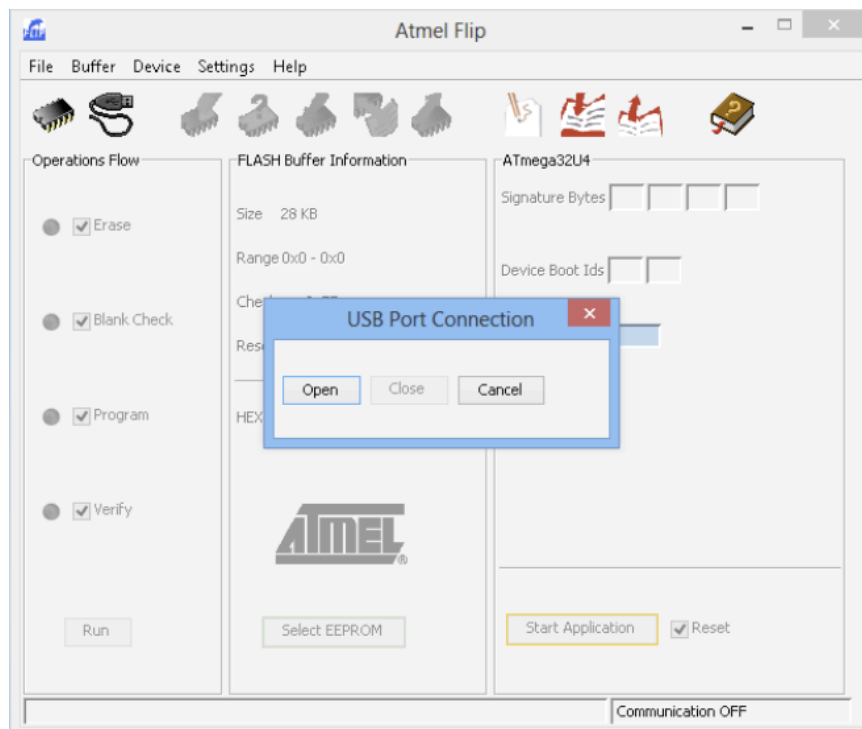
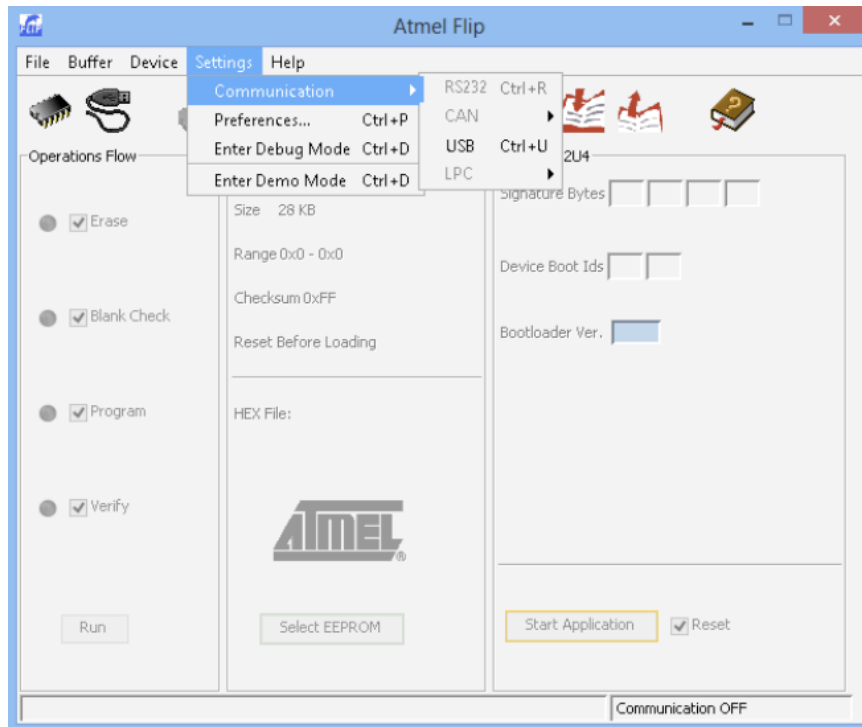


Updating your PS360+ Firmware (Windows 8 Version)

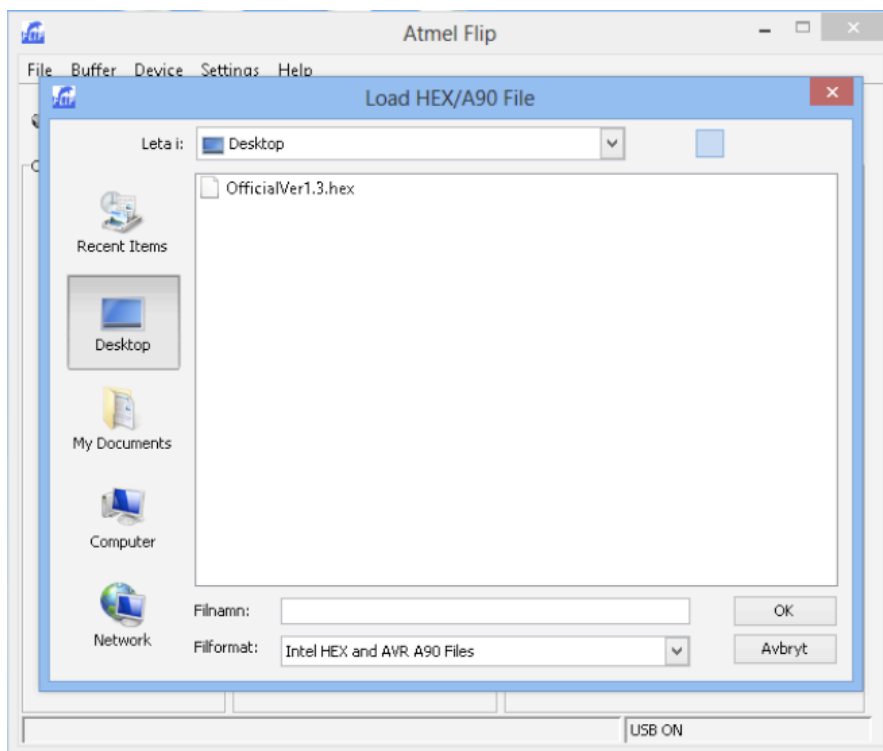
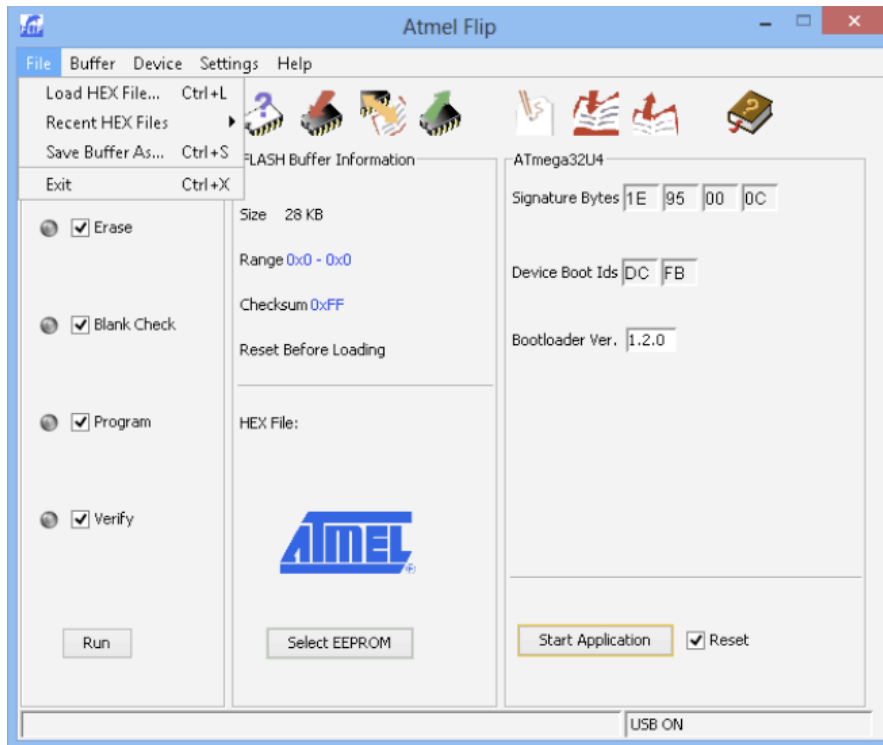
1. Go to the Desktop and right click on the FLIP icon, click on "Run as administrator". Click "Yes" in the new window.



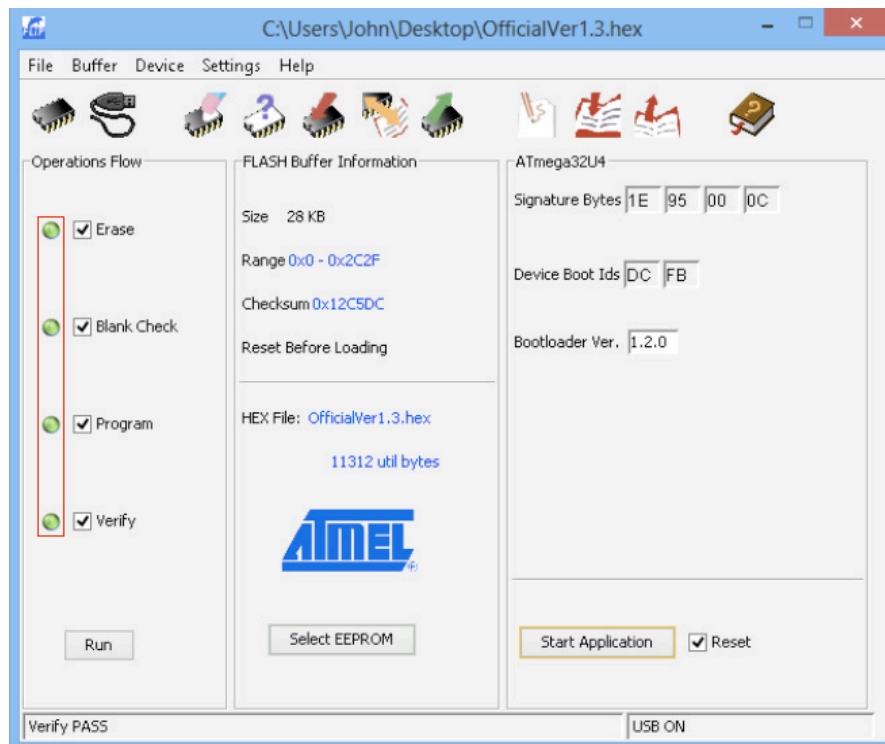
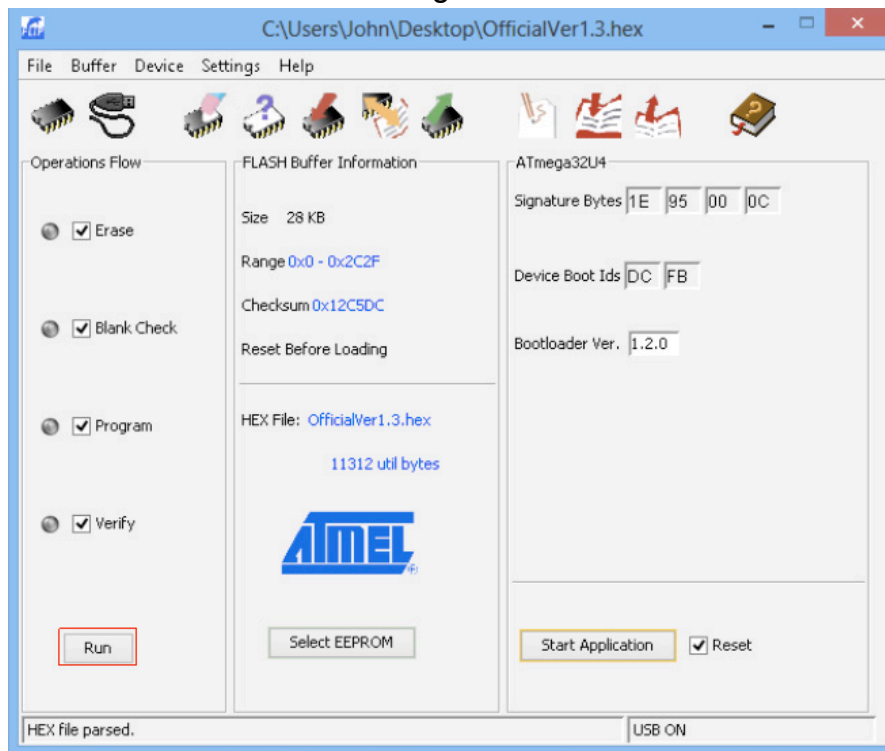
2. Now that the FLIP software is open click on "Device -> Select" and select ATmega32U4, click "OK". After that click on "Settings -> Communication -> USB". In the new window click on "Open".



3. Click on "File -> Load HEX File...", find the ".hex" file you want to update with and click OK.



4. Click on "Run", now it will start programming the Atmel chip. After it is done the four round balls to the left will turn green. DONE.



AKISHOP CUSTOMS